

SAFETY FIRST

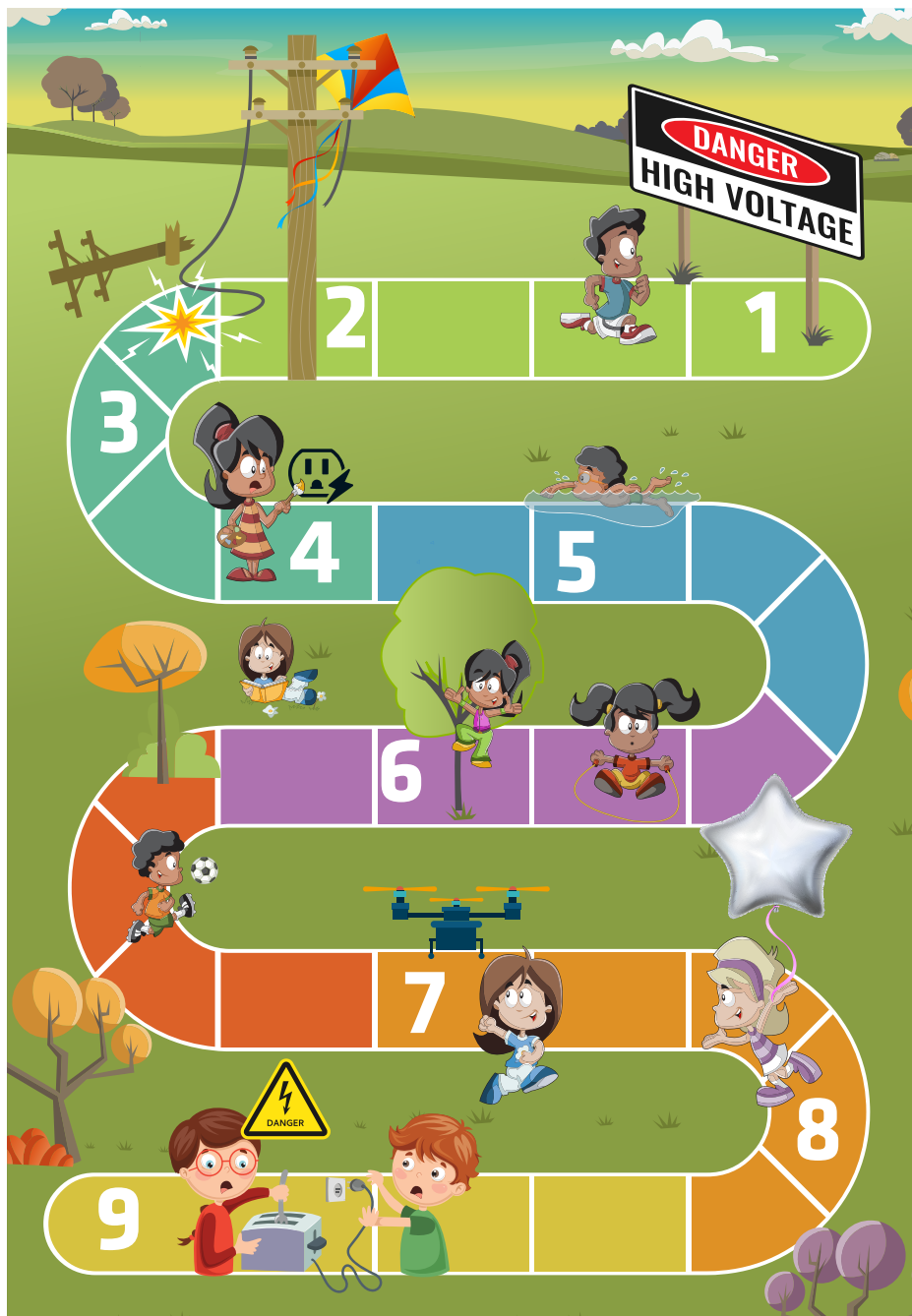
SAFETY + EQUIPMENT

DANGER HIGH VOLTAGE



Electrical safety is something that should be practiced every single day. Please take a moment to review this scene with your kids, and match up each safety tip with its corresponding image.

- Never put fingers or other objects in an outlet.
- Keep metal objects out of toasters.
- Never use anything with a cord or plug around water.
- Learn what "Danger High Voltage" signs look like, and stay away from power lines, substations and electrical equipment.
- Don't climb trees near power lines, tree branches can conduct electricity.
- Stay away from low-hanging or downed power lines. Have an adult call 911.
- Fly drones, kites, and model aircraft in open areas away from power poles, power lines and substations.
- Never attempt to retrieve a kite or device that is caught in a power line or that falls into a substation. Call us at 888-DIAL-PNM.
- Metallic party balloons are conductive and can cause fires and outages. Dispose of them properly in the trash.



SAFETY FIRST

**SAFETY +
EQUIPMENT**

**DANGER
HIGH VOLTAGE**

Electricity powers so much of our lives, but it can be extremely dangerous. It's important to teach your family to be cautious while using electricity and around electrical equipment.

Visit PNM.com/safety to learn more.

K	X	G	T	X	Y	Z	C	K	E	M	Y	B	R	N
D	I	X	Z	G	F	U	S	I	Q	R	T	A	E	P
E	G	L	R	B	R	O	N	T	X	Z	I	L	G	J
R	G	E	O	R	E	E	U	E	Q	R	C	L	N	Y
O	N	A	E	W	F	C	K	S	E	M	I	O	A	L
E	P	N	T	X	A	P	T	M	Y	G	R	O	D	N
H	T	O	Y	L	C	T	R	R	L	J	T	N	S	R
S	E	L	O	P	O	O	T	B	Z	R	C	A	M	Q
E	I	U	X	P	F	V	X	N	E	M	E	N	I	L
E	S	U	B	S	T	A	T	I	O	N	L	W	M	Y
R	A	A	N	O	U	T	L	E	T	P	E	Y	O	F
T	W	A	F	E	J	O	U	H	U	Z	L	E	K	P
Q	R	D	A	E	O	T	K	T	X	A	N	L	P	R
T	Z	T	E	O	T	S	W	G	R	I	L	V	I	Q
G	U	Q	J	G	T	Y	C	G	L	B	A	O	E	Q

**BALLOON
DANGER
ELECTRICITY
ENERGY
CURRENT
KILOWATT
KITES
LINE
LINEMEN
MYLAR
OUTLET
POLES
POWER
SAFETY
SUBSTATION
TRANSFORMER
TREES
VOLTAGE**

Electrical safety requires recognizing some of the key words that are used when talking about electricity. Locate all of the words to the right of this grid. Words may be horizontal, vertical, diagonal or backwards.

